

coming home to pure living



[www.akasapureliving-apartment.com](http://www.akasapureliving-apartment.com)

Development by  
DWIJAYA KARYA

 **sinarmas land**  
Building for a Better Future

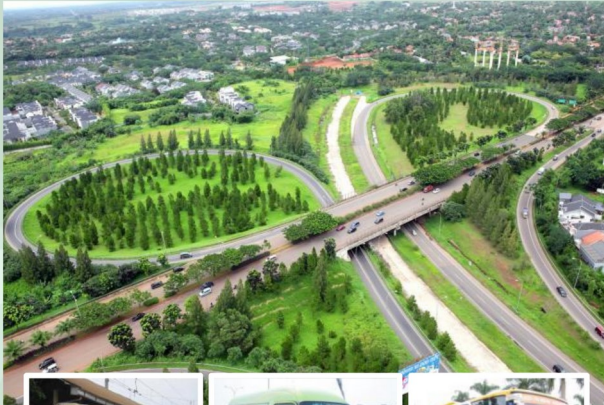
# Location



coming home to pure living

**kirana**  
at akasa PURE LIVING

# Accessibility



*Akasa Pure Living  
memiliki akses  
langsung  
keseluruh jalan  
tol utama di  
wilayah  
Jabodetabek dan  
menawarkan akses  
mudah ke layanan  
kereta api dan  
bus*



coming home to pure living

**kirana**  
at akasa PURE LIVING

# Surroundings



## PERKANTORAN

- Sunburst
- Wisma BCA, BFI, BRI, MPM, BNI
- Artajasa
- German Centre
- Smart Telecom
- Green Office Park
- Unilever
- Telkom dll



## PENDIDIKAN

- Prasetya Mulya
- SGU
- BSI
- St Ursula
- Al Azhar
- Deutsch Schule
- Ora Et Labora
- Binus, SWA
- JNS, IPEKA dll



## RETAIL

- Teras Kota
- Giant
- Carefour
- Pasar Modern
- BSD Square
- ITC BSD
- AEON Mall
- The Breeze
- Autoparts dll



## FASILITAS LAIN

- Eka Hospital
- Medika BSD
- RS THT Proklamasi
- Convention (ICE)
- Ocean Park
- Damai Indah Golf
- Taman Kota
- Hotel Santika, Grand Zuri dll



## PERUMAHAN

- Giri Loka
- Puspita Loka
- Nusa Loka
- Anthea
- Victoria River Park
- Vermont
- The Green
- De Latinos
- Green Cove dll

coming home to pure living

**kirana**  
at akasa PURE LIVING

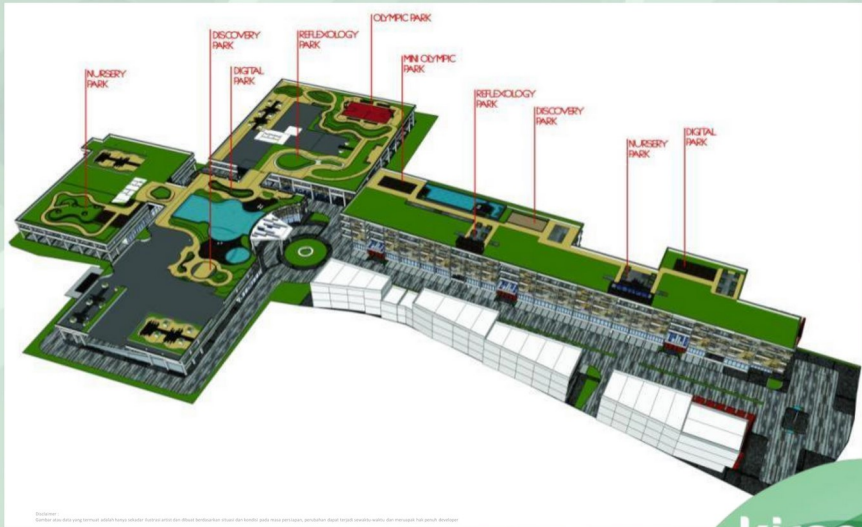
# Concept Block plan



coming home to pure living

**kirana**  
at akasa PURE LIVING

# Concept Block plan



Disclaimer:  
Gambar ini adalah yang terhasil adalah hanya sebagai konsep untuk dan tidak berkekuatan sebagai dan tidak boleh menjadi perincian, perubahan dapat terjadi sewaktu-waktu dan merupakan hak penuh developer

coming home to pure living

**kirana**  
at akasa PURE LIVING

# Facade



coming home to pure living

**kirana**  
at akasa PURE LIVING

# Facade



Disclaimer: Content on this page is for informational purposes only. It is not intended to be used as a substitute for professional advice. Please consult your lawyer, accountant, or other professional advisor before making any decisions. We assume no responsibility for any errors or omissions in this content.

coming home to pure living

**kirana**  
at akasa PURE LIVING



# Drop Off Zone



coming home to pure living

**kirana**  
at akasa PURE LIVING

# Arcade



coming home to pure living

**kirana**  
at akasa PURE LIVING

# Thematic Swimming pool



coming home to pure living

**kirana**  
at akasa PURE LIVING

# Thematic Swimming pool



coming home to pure living

**kirana**  
at akasa PURE LIVING

# Facilities



coming home to pure living

**kirana**  
at akasa PURE LIVING

# Facilities

Thematic Swimming Pool

Shopping Arcade

Jogging Track

Children Playground

Gymnasium

Function Room

Sky Garden

BBQ area

Nursery Park

Digital Park

Discovery Park

Reflexology Park

Olympic Park

Balcony

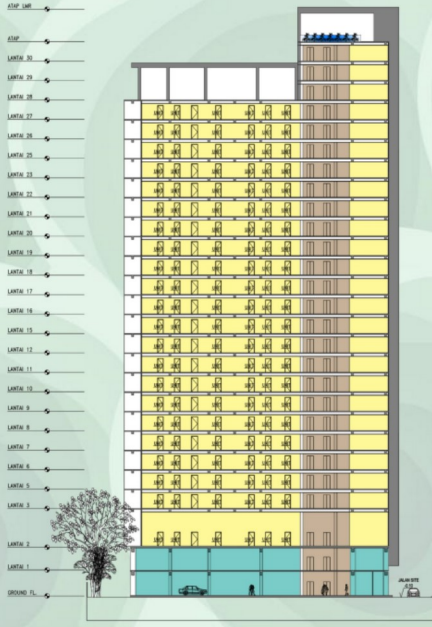
Shophouses

Security 24 hours

coming home to pure living

**kirana**  
at akasa PURE LIVING

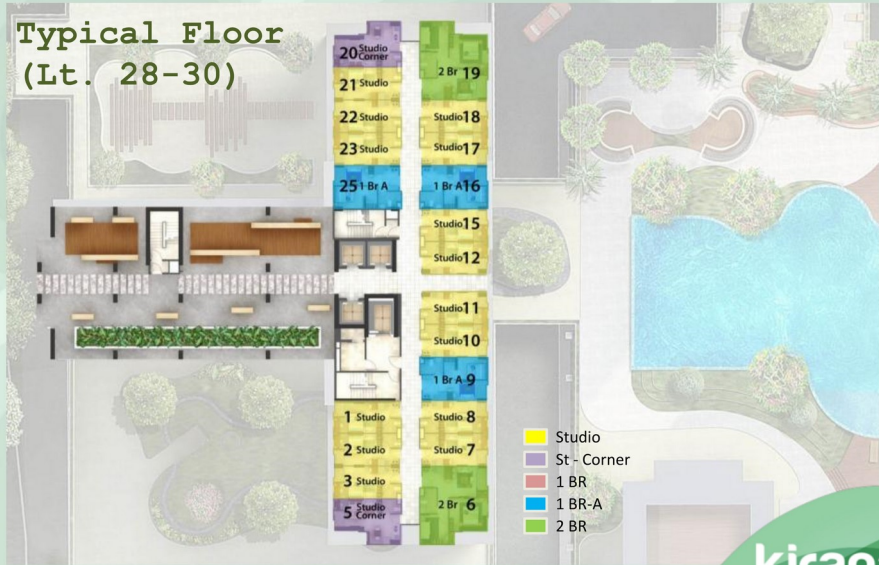
# Section







# Typical Floor (Lt. 28-30)



- Studio
- St - Corner
- 1 BR
- 1 BR-A
- 2 BR

coming home to pure living

**kirana**  
at akasa PURE LIVIN

# Unit plan



STUDIO  
Semi Gross : 22.48 m2  
Nett area : 18.18 m2

coming home to pure living

**kirana**  
at akasa PURE LIVING

# Unit plan



## STUDIO CORNER

Semi Gross : 27.65 m<sup>2</sup>

Nett area : 22.36 m<sup>2</sup>

coming home to pure living

**kirana**  
at akasa PURE LIVING

# Unit plan



1 BED ROOM  
Semi Gross : 29.96 m<sup>2</sup>  
Nett area : 24.23 m<sup>2</sup>

coming home to pure living

**kirana**  
at akasa PURE LIVING

# Unit plan



1 BED ROOM A  
Semi Gross : 30.24 m<sup>2</sup>  
Nett area : 24.46 m<sup>2</sup>

coming home to pure living

**kirana**  
at akasa PURE LIVING

# Unit plan



2 BED ROOMS

Semi Gross : 50.22 m<sup>2</sup>

Nett area : 40.62 m<sup>2</sup>

coming home to pure living

**kirana**  
at akasa PURE LIVING

# Spesifikasi

Dinding	: Bata ringan dan panel beton precast di cat
Plafond	: Beton Expose dan gypsum di cat
Jendela	: Kaca polos bening dengan rangka aluminium
Pintu Utama	: Engineered door
Lantai	: Roman / setara
Lantai / Dinding Toilet	: Roman / setara
Sanitasi	: TOTO / setara
Listrik	
- Studio	: 1.300 VA
- Studio Corner	: 1.300 VA
- 1 Bedroom	: 1.300 VA
- 1 Bedroom A	: 1.300 VA
- 2 Bedrooms	: 2.200 VA
Air	: PAM

Disclaimer: Gambar dan data yang tertera adalah bersifat estimasi. Untuk detail dan spesifikasi bangunan, mohon hubungi sales atau hubungi kami melalui link profil developer.

coming home to pure living

**kirana**  
at akasa PURE LIVING



**THANK YOU**

coming home to pure living